

Résidence "PARC DE SAINTE LUCIE"

COMMUNE DE BORGIO
BATIMENT C - LOT 29 - ETAGE 1 - TYPE 2

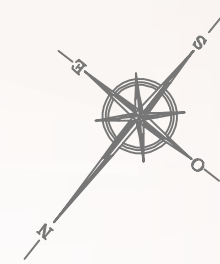
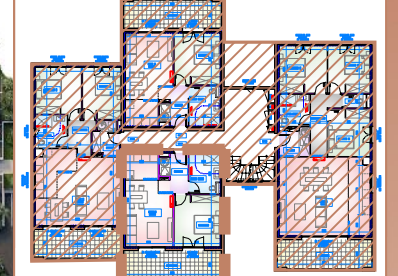


TABLEAU DES SURFACES
BATIMENT C - LOT 29 - T2 - R+1

ENTREE	3.85m ²
PIECE A VIVRE	21.50m ²
CHAMBRE	12.86m ²
SALLE D'EAU	6.47m ²
TOTAL	44.68m ²
TERRASSE	15.51m ²

